



# MONTHLY MEMBERSHIP PROGRESS REPORT

District 201Q2

Results as of: 06/30/2019

GMT: ANN ELDRIDGE

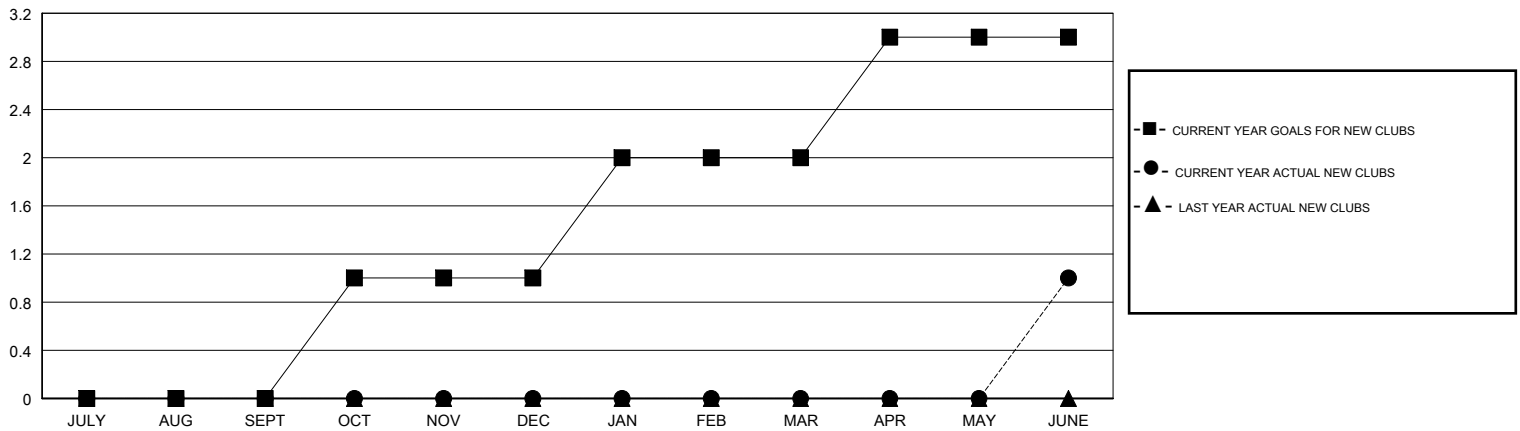
LOCATION AUSTRALIA

GMT CA

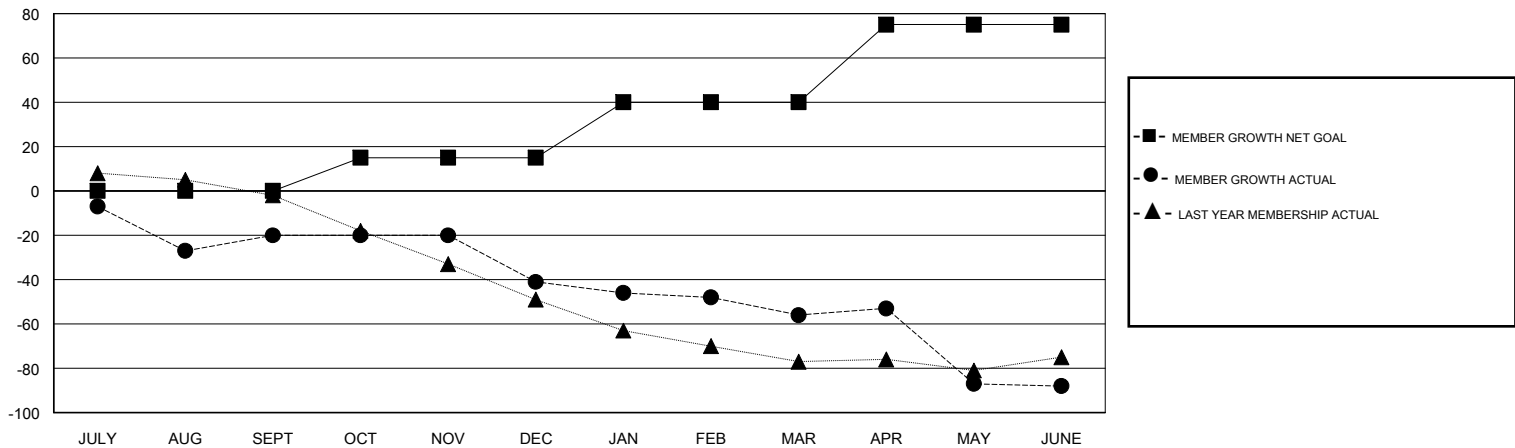
Clubs			
RESULTS FOR 2018-2019			
QUARTER	NEW CLUB GOAL	NEW CLUBS	DROPPED CLUBS
JULY/AUG/SEPT	0	0	1
OCT/NOV/DEC	1	0	0
JAN/FEB/MAR	1	0	0
APR/MAY/JUNE	1	1	2

Members			
RESULTS FOR 2018-2019			
QUARTER	MEMBER GROWTH NET GOAL	MEMBER GROWTH ACTUAL	DROPPED MEMBERS ACTUAL (including transfers)
JULY/AUG/SEPT	0	54	59
OCT/NOV/DEC	15	26	46
JAN/FEB/MAR	25	28	40
APR/MAY/JUNE	35	75	101

GOALS AND ACTUAL NEW CLUBS CUMULATIVE



GOALS AND ACTUAL MEMBERS CUMULATIVE



DROPPED CLUBS: 3	37 CLUBS OF 64 ADDED 1 OR MORE NEW MEMBERS	<u>GENDER DISTRIBUTION</u> MALE 661 (61.09%) FEMALE 421 (38.91%) Women Percentage Fiscal Year Goal: 40%
<u>DROPPED MEMBERS</u> DECEASED 26 CLUB CANCELLED 43 OTHER 177 TOTAL 246	<a href="#">CLICK HERE FOR CUMULATIVE MEMBERSHIP DATA</a>	TOTAL FAMILY UNIT MEMBERS 159 FAMILY MEMBERS PAYING HALF DUES 80